

MAEDA MINI CRAWLER CRANES

LITTLE CRANES WITH BIG IDEAS

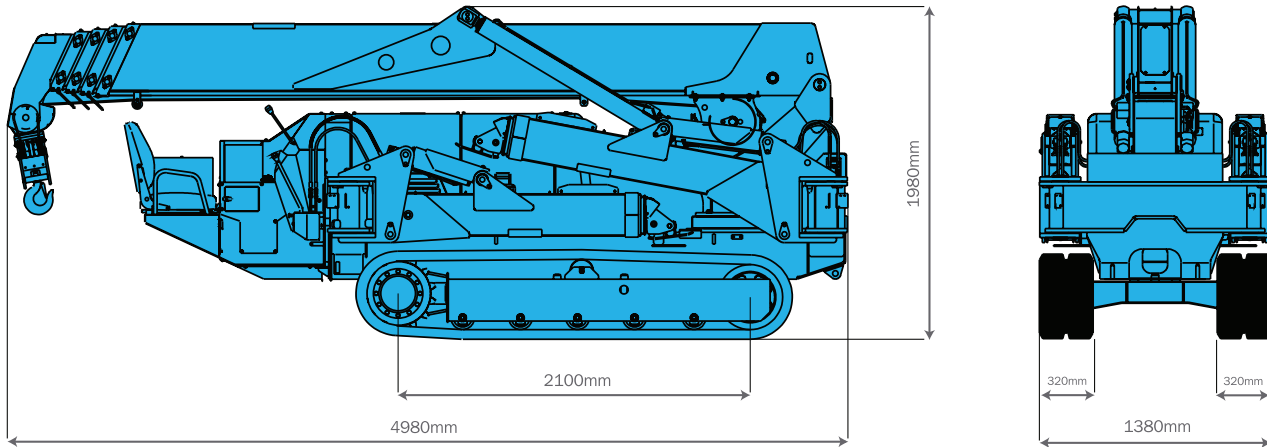


For further details please contact Complete Glass. Due to improvements, the specifications are subject to change without notice.

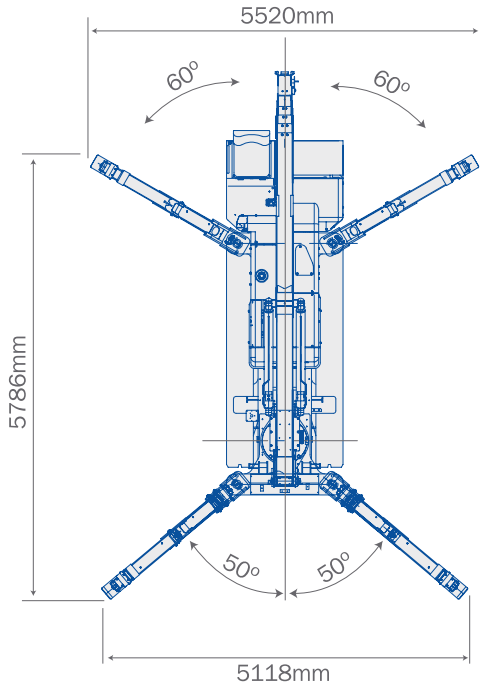
DIMENSIONS

MAEDA MC405CRM

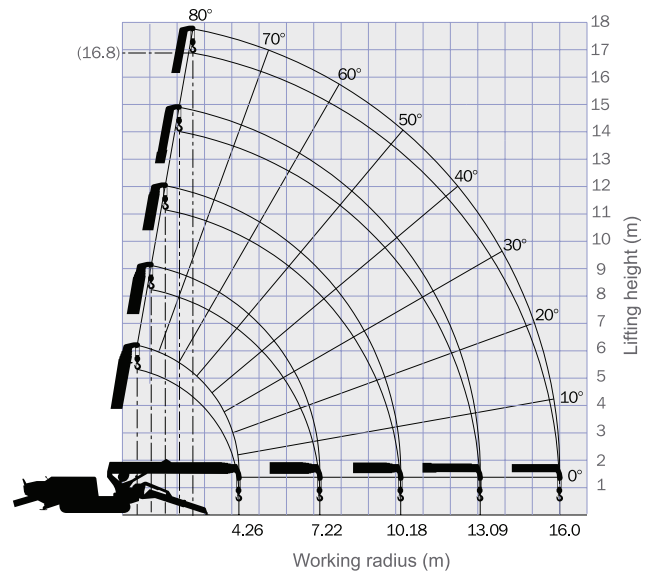
OVERALL SIZE



OUTRIGGER SPREAD DIMENSIONS



WORKING RANGE CHART



The Working Range Chart does not take into account boom deflection under load.

The maximum reach below ground level is:

Four Fall	Two Fall	Single Fall
20.50m	41.00m	82.00m

LOAD CHARTS

MAEDA MC405CRM

TOTAL RATED LOAD (4 FALLS) Outriggers at Maximum Position

4.735m/7.695m boom		10.655m boom		13.565m boom		16.475m boom	
Working radius (m)	Total rated load (kg)	Working radius (m)	Total rated load (kg)	Working radius (m)	Total rated load (kg)	Working radius (m)	Total rated load (kg)
< 2.7	3830	3.5	3030	4.0	2230	5.0	1130
3.5	3030	4.0	2580	4.5	1930	5.5	980
4.0	2580	5.0	2030	5.0	1730	6.0	910
5.0	2030	6.0	1680	6.0	1400	7.0	760
6.0	1680	7.0	1380	7.0	1180	8.0	650
7.0	1380	8.0	1130	8.0	1030	9.0	600
7.25	1330	9.0	880	9.0	930	10.0	550
		10.2	580	10.0	830	11.0	490
				11.0	690	12.0	440
				12.0	530	13.0	380
				13.1	430	14.0	320
						15.0	260
						16.0	210

TOTAL RATED LOAD (4 FALLS) Outriggers at Intermediate Position

4.735m/7.695m boom		10.655m boom		13.565m boom		16.475m boom	
Working radius (m)	Total rated load (kg)	Working radius (m)	Total rated load (kg)	Working radius (m)	Total rated load (kg)	Working radius (m)	Total rated load (kg)
< 2.7	3830	3.5	3030	4.0	2230	5.0	1130
3.5	3030	4.0	2580	4.5	1830	5.5	980
4.0	2580	5.0	1880	5.0	1630	6.0	910
5.0	1880	6.0	1430	6.0	1330	7.0	730
6.0	1430	7.0	1130	7.0	1080	8.0	630
7.0	1160	8.0	880	8.0	880	9.0	550
7.25	1120	9.0	740	9.0	730	10.0	480
		10.2	490	10.0	530	11.0	430
				11.0	480	12.0	380
				12.0	430	13.0	330
				13.1	330	14.0	280
						15.0	220
						16.0	180

TOTAL RATED LOAD (4 FALLS) Outriggers at Minimum Position

4.735m/7.695m boom		10.655m boom		13.565m boom		16.475m boom	
Working radius (m)	Total rated load (kg)	Working radius (m)	Total rated load (kg)	Working radius (m)	Total rated load (kg)	Working radius (m)	Total rated load (kg)
< 2.7	3830	3.5	3030	4.0	2230	5.0	1130
3.5	3030	4.0	2580	4.5	1830	5.5	980
4.0	2580	5.0	1680	5.0	1630	6.0	880
5.0	1680	6.0	1180	6.0	1180	7.0	730
6.0	1180	7.0	880	7.0	830	8.0	530
7.0	930	8.0	730	8.0	680	9.0	450
7.25	780	9.0	580	9.0	550	10.0	420
		10.2	400	10.0	430	11.0	370
				11.0	380	12.0	330
				12.0	350	13.0	280
				13.1	310	14.0	240
						15.0	190
						16.0	150

The Total Rated Load Charts are based on the actual working radius including boom deflection. The weight of the hook (standard 4 fall - 30kg) must be included as part of the load shown in the Total Rated Load Charts.

When using two fall or single fall hooks, use the appropriate four fall Total Rated Load Chart above but with a maximum load of: Two fall - 1930kg, Single Fall - 970kg.

TECHNICAL SPECIFICATIONS

MAEDA MC405CRM

OFFERING THE BEST BALANCE OF POWER AND DESIGN

- Pick & Carry Duty (500kg maximum)
- Two Travel Speeds
- Programmable Moment Limiter
- 1130kg at 5.0m radius on 16.43m boom
- Rubber Tracks
- Hydrostatic Transmission
- Centralised Controls
- 4 Fall / 2 Fall Hook Block
- Automatic Hook Stowage System
- Tilt Sensor / Alarm
- Powerful Winch with Hydraulic Disc Brake
- Two Speed Winch
- Fully Automatic Pentagonal Section Boom
- Cable Remote Controller



SPECIFICATIONS

Model:	MC405CRM
Crane capacity:	3.83t x 2.7m
Max working radius:	16m
Max lifting height:	16.8m
Hook speed:	10m / min. (18.0 / min.) (4 falls, 4th layer)
Single line speed:	40m / min. (72.0 / min.) (4th layer)
Hoist rope:	IWRC 6 x WS(26) 8mm x 95m
TELESCOPIC SYSTEM	
Boom length:	4.735m - 16.475m
Telescoping speed:	11.7m / 54.2 sec. (41.3 sec.)
Boom type:	Fully automatic 5 section pentagon telescopic boom
BOOM HOIST SYSTEM	
Hoist angle / speed:	0 - 80° / 24.5 sec. (17 sec.)
SLEW SYSTEM	
Slew angle / speed:	360° / 2.5 rpm (2.1 rpm)
OUTRIGGER SYSTEM	
Type:	Extension and set up by direct acting hydraulic cylinders
Max ext. dimensions:	(Length) 5786mm x (Front) 5118mm x (Rear) 5520mm
TRACTION SYSTEM	
Drive:	Hydraulic motor driven, stepless speed changer
Travel speed:	0 - 3.3 km/h
Gradability:	20°
Crawler length x width:	2100mm x 320mm
Ground pressure:	49.0 (0.50) kpa (kgf/cm ²)
ENGINE	
Model:	Yanmar 3TNV88-PMB
Type:	3 cylinder water cooled diesel
Rated output:	21.8kw / 2400min-1 (29.6PS/2400rpm)
Starting method:	Electric
Fuel / fuel tank capacity:	Diesel / 60L
REMOTE CONTROL SYSTEM	
Type:	Cable remote controller, micro-speed mode, load display for transmitter, outrigger operation
DIMENSIONS	
Length x Width x Height:	4980mm x 1380mm x 1980mm
Weight MC305C-2:	5600kg 5750kg
STANDARD EQUIPMENT	
	Overwind protection, load indicator, hydraulic safety valve, wire rope latch, level, machine body inclination alarm, EMO switch, travel lock lever, outrigger, interlock device, moment limiter, rotary lamp, hour-meter, 4-fall / 2 fall hook block
OPTIONAL EQUIPMENT	
	Radio remote control, white rubber tracks, single fall hook, searcher hook, electric motor